



COVID-19

Protocols for Kern County K-12 Schools 2021-22

Release 4.0 / Last updated Sept. 27, 2021

Kern County
**Superintendent
of Schools**
...advocates for children



***FOR INTERNAL SCHOOL DISTRICT USE ONLY ***

TABLE OF CONTENTS

Page 3	Definitions
Page 4	Positive Student To Do Checklist
Page 5	TREE 1: STUDENT OR STAFF <u>WITH SYMPTOMS</u>
Page 6	TREE 2: POSITIVE CASE AT SCHOOL (STUDENTS)
Page 7	TREE 3: POSITIVE CASE AT SCHOOL (STAFF)
Page 8	TREE 4: IN-HOME EXPOSURE (STUDENT OR STAFF)
Page 9	TREE 5: IN-COMMUNITY EXPOSURE (STUDENT OR STAFF)
Page 10	TREE 6: PRESUMPTIVE POSITIVE CASE (STUDENT OR STAFF)

Protocol Examples

Detailed examples of KCSOS's COVID-19 protocols can be accessed by clicking the link below. Please feel free to adapt these for your own purposes.

[Employee and Student Protocols at School Sites](#)

Release Update Notes

This document was first released on Sept. 7, 2021.

Release 2.0 / Sept. 9, 2021 — added clarification regarding discontinuation of isolations; added notation labeling document for internal use only.

Release 3.0 / Sept. 13, 2021 — updated decision trees and definition page for better clarity around protocols for shortened quarantine.

Release 4.0 / Sept. 27, 2021 — made updates to the definitions and notes page relative to 7-day quarantine and acceptable testing types. Updated Tree 4 (in-home exposure) to clarify the steps to take if ongoing close contact is occurring between a positive case and others in the home. Added a Tree 6 regarding presumptive positive cases.

DEFINITIONS AND NOTES

Close Contact

Close contact is defined as being within 6 feet of a confirmed COVID-19 person for a cumulative total of 15 minutes or more over a 24-hour period. The term “exposed” may be used synonymously with “close contact.”

Quarantine

Quarantine keeps someone who has been exposed to the virus away from others. The **standard quarantine** period is 14 days. If a close contact is asymptomatic, he or she may follow criteria for a **shortened quarantine** as outlined below.

- May return to campus on day 11 from date of last exposure without test.
- OR-
- May return to campus on day 8 from last exposure with negative test collected on or after day 5.

NOTE: In order for an asymptomatic close contact to discontinue quarantine before 14 days following last known exposure, they must: Continue daily self-monitoring for symptoms through day 14 from last known exposure; Follow all recommended non-pharmaceutical interventions (e.g., wearing a mask when around others, hand washing, avoiding crowds) through day 14 from last known exposure. If any symptoms develop during this 14-day period, the exposed person must immediately isolate, get tested and contact their healthcare provider with any questions regarding their care.

Isolation

Isolation keeps someone who is infected with the virus away from others, even in their home.

NOTE: Anyone isolating must meet the discontinue isolation criteria: [Guidance on Isolation and Quarantine for COVID-19 Contact Tracing \(ca.gov\)](#).

Persons may be released to return from isolation by:

- A School nurse assessing the criteria to discontinue isolation has been met.
- A medical provider.
- A letter by a Public Health Nurse assigned as the case manager.

Fully Vaccinated

Fully vaccinated is defined as having received, at least 14 days prior, either the second dose in a two-dose COVID-19 vaccine series or a single-dose COVID-19 vaccine.

Acceptable Tests

Diagnostic PCR tests are preferred, but not required. Other options include rapid antigen tests and pooled PCR tests.

POSITIVE CASE ON CAMPUS

TO DO CHECKLIST



If student or employee is onsite when the positive is confirmed, isolate them until they are able to go home. Call student's parents.



Exclude positive case from campus. (See Tree 1)



Determine contagious window by asking when symptoms first began, or if asymptomatic, when they tested.



If the positive case was onsite anytime in the 48 hour window before symptom onset, or before testing if asymptomatic through the time they were removed from the site, engage in contact tracing.



Quarantine students and employees deemed as close contacts. (See Tree 2 for students and Tree 3 for staff).



Arrange for deep cleaning of impacted classroom or workspace.



Send all required notifications to parents and employees (Close contact letter, Community letter, CalOSHA notification to anyone on worksite during contagious window).



Send positive case and close contact information to Kern County Public Health using provided spreadsheet.



Work with employee and/or family to determine when they can return based on Isolation/Quarantine guidelines.

TREE 1: STUDENT OR STAFF WITH SYMPTOMS

Student or staff has any of the following NEW symptoms with no known exposures:

Fever or chills
Cough
Shortness of breath
Difficulty breathing
Fatigue
Muscle or body aches

Headache
New loss of taste or smell
Sore throat
Congestion or runny nose
Nausea or vomiting
Diarrhea

EXCLUDE FROM SCHOOL

THREE OPTIONS...

1

COVID TEST

OR

2

Receive non-covid diagnosis from a health care provider.

OR

3

If no COVID test or non-COVID diagnosis from health care provider,
may return to school on **Day 11**
after symptom onset if at least 24 hours have passed since fever and symptoms have improved significantly.

POSITIVE TEST

NEGATIVE TEST

ISOLATE

Exclude for 10 days from symptom onset.

RETURN TO SCHOOL

May return to school if at least 24 hours have passed since fever and symptoms have improved significantly.

RETURN TO SCHOOL

A COVID positive persons may be released to return from isolation by:

- A school nurse assessing the criteria to discontinue isolation has been met.
- A medical provider.
- A letter by a Public Health Nurse assigned as the case manager.

BEGIN CONTACT TRACING

Identify all close contacts in the school setting and report using the provided spreadsheet and email to the following:

**devlinm@kerncounty.com,
ochoaja@kerncounty.com,
and jomendiburu@kern.org**

TREE 2: POSITIVE CASE AT SCHOOL FOR STUDENTS ONLY

POSITIVE PERSON AT SCHOOL

Was the positive person within 6 feet of any student for a period that adds up to 15 minutes or more over a 24-hour period?

NO

No close contacts identified. No action needed.

YES

WAS THE CLOSE CONTACT STUDENT FULLY VACCINATED?

Or have had COVID-19 in the past three months?

YES

IS THIS STUDENT SYMPTOMATIC?

YES

ISOLATE

Exclude for 10 days from symptom onset.

Test for COVID-19.

SEE PAGE 3 FOR FURTHER ISOLATION GUIDANCE

NO

RETURN TO SCHOOL

May return to campus. Testing recommended.

NO

Were the positive case and the exposed student **BOTH** wearing masks?

YES

IN-SCHOOL MODIFIED QUARANTINE

Student may continue in-person instruction if asymptomatic. Test 2x per week for 10 days after exposure. No extracurricular activities during 10 days.

NO

QUARANTINE

Exclude for 14 days from last exposure.

- OR -

Follow criteria for a shortened quarantine outlined below.

Test for COVID-19.

RETURN TO SCHOOL IF ASYMPTOMATIC

On day 11 from date of last exposure without test.

-OR-

On day 8 from last exposure with negative test collected on or after day 5.

In order for an asymptomatic close contact to discontinue quarantine before 14 days following last known exposure, they must: Continue daily self-monitoring for symptoms through day 14 from last known exposure; Follow all recommended non-pharmaceutical interventions (e.g., wearing a mask when around others, hand washing, avoiding crowds) through day 14 from last known exposure. If any symptoms develop during this 14-day period, the exposed person must immediately isolate, get tested and contact their healthcare provider with any questions regarding their care.



TREE 3: POSITIVE CASE AT SCHOOL FOR STAFF ONLY

POSITIVE PERSON AT SCHOOL

Was the positive person within 6 feet of a staff member for a period that adds up to 15 minutes or more over a 24-hour period?

NO

No close contacts identified.
No action needed.

YES

WAS THE CLOSE CONTACT STAFF MEMBER FULLY VACCINATED?

Or have had COVID-19 in the past three months?

YES

NO

IS CLOSE CONTACT STAFF MEMBER SYMPTOMATIC?

YES

NO

ISOLATE

Exclude for 10 days from symptom onset.

Test for COVID-19.

SEE PAGE 3 FOR FURTHER ISOLATION GUIDANCE

No quarantine required.
May return to campus.

QUARANTINE

Exclude for 14 days from last exposure.

- OR -

Follow criteria for a shortened quarantine outlined on page 3.

Test for COVID-19.

TREE 4: IN-HOME EXPOSURE STUDENT OR EMPLOYEE

EXPOSURE TO COVID CASE WITH SOMEONE YOU LIVE WITH

IS THE EXPOSED PERSON FULLY VACCINATED?

Or has had COVID-19 in the past three months?

YES

SYMPTOMATIC?

NO

No quarantine
required.

May return to
school.

YES

ISOLATE

Exclude for
10 days from
symptom
onset. Test for
COVID-19.

ISOLATE

Exclude for 10 days from
symptom onset.

Test for COVID-19.

SEE PAGE 3 FOR
FURTHER ISOLATION
GUIDANCE.

NO

SYMPTOMATIC?

YES

NO

Is ongoing close contact between the positive
case and others in the household occurring?

NO

QUARANTINE

Exclude for 14 days from
last exposure.

- OR -

Follow criteria for a
shortened quarantine
outlined on page 3.

Test for COVID-19.

YES

DELAYED QUARANTINE

Quarantine the close contact for the duration of the
in-home positive case's isolation.

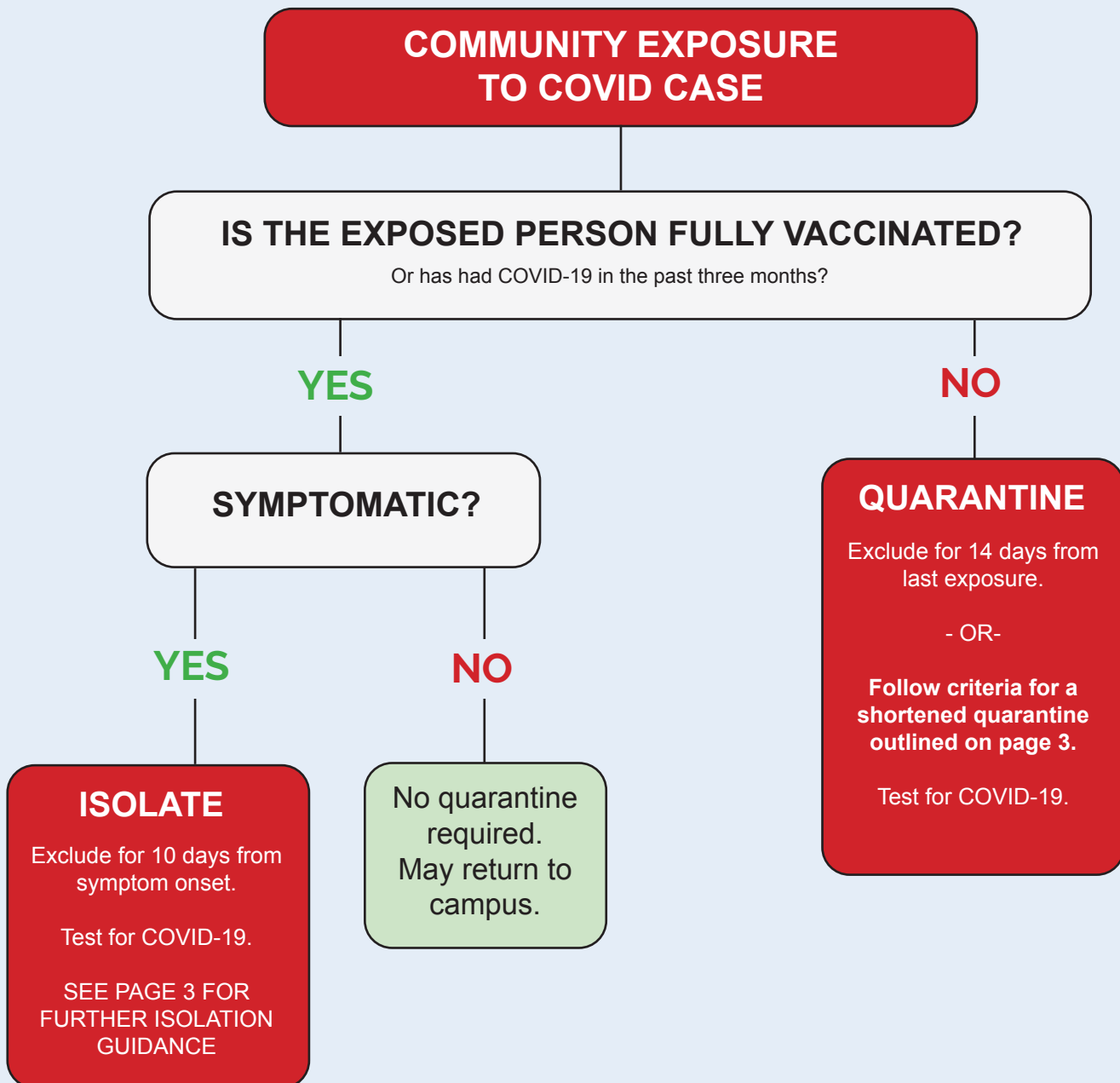
-THEN-

Start the counting of **delayed quarantine** days on the day
the in-home positive case has cleared their isolation.

Follow criteria for shortened quarantine outlined on page 3.



TREE 5: IN-COMMUNITY EXPOSURE STUDENT OR EMPLOYEE



TREE 6:
PRESUMPTIVE POSITIVE CASE
STUDENT OR EMPLOYEE

